

12/16/19

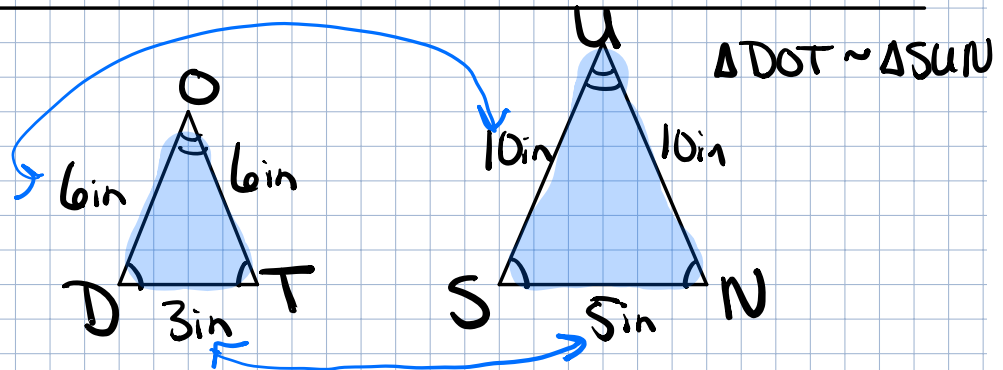
Be able to identify similar and congruent figures and find scale factor.

Congruent \cong

- Same shape
- Same angles
- Same sides

Similar \sim

- Same shape
- Same angles
- Sides are proportional



$$\angle D \cong \angle S$$

$$\angle T \cong \angle N$$

$$\angle O \cong \angle U$$

$$\overline{DO} \text{ corresponds to } \overline{SU}$$

$$\overline{OT} \text{ corresponds to } \overline{UN}$$

$$\overline{DT} \text{ corresponds to } \overline{SN}$$

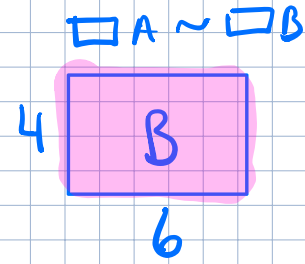
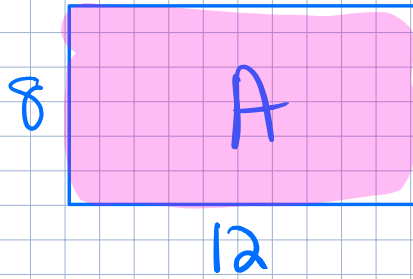
Scale Factor

ratio of corresponding sides

$$6:10$$

$$\frac{6}{10} = \frac{3}{5}$$

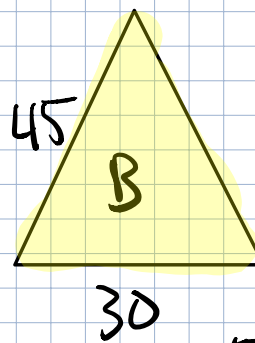
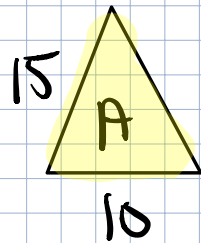
$$3:5$$



$\square A \sim \square B$

Scale Factor $\frac{8}{4} = \frac{2}{1}$

$$\frac{12}{6} = \frac{2}{1}$$



$\triangle A \sim \triangle B$

Scale Factor $\frac{15}{45} = \frac{1}{3}$

$$\frac{10}{30} = \frac{1}{3}$$



